

KitchenAid



KitchenAid

WEARING YOUR
HEART ON
YOUR SLEEVE



THAT'S
THE MARK
OF A MAKER



Connecting to Culinary Possibilities 將無限想像與烹調融合

Everything you do in the kitchen makes a meaningful mark. So each KitchenAid product is designed with the Maker in mind. Designed with features crafted to bring all your ideas to life.

No matter what you create: bake, mix, or blend, you'll have appliances that open up a world of possibility in your kitchen. And that's the mark of a Maker.

您在廚房做的創作都有其獨特意義。KitchenAid 為此在設計各式產品時都考慮到一切細節，務求讓你將煮意全部輕鬆實踐。

無論您製作哪一種佳餚：烘焗、混合、打磨，我們的廚電都能助您開啟每一段尋找美味的航程。而這就是創作者的象徵。



INDEX 目錄

06

BAKING 烘培

Stand Mixer 廚師機
Stand Mixer Attachment 廚師機配件
Optional Stand Mixer Accessory 可選購廚師機附件
Hand Mixer 手持式打蛋器

26

CULINARY 烹飪

Countertop Oven 電焗爐

30

HEALTHY & FRESH 健康與新鮮

Stand Blender 攪拌機
Hand Blender 手持式攪拌機
Food Processor 食物處理器
Food Chopper 食物切碎器

40

COFFEE & BREAKFAST 咖啡及早餐

Electrical Kettle 電熱水壺
Toaster 多士爐



**Explore KitchenAid from our online channels
exclusive recipes and content.**

**在我們的網上頻道，
發掘更多產品以外的烹飪靈感和創意。**

All pictures are for reference only, the real product should be considered as final. 圖片只供參考，所有產品均以實物為準。
In case of any disputes, the decision of KitchenAid Hong Kong should be final. KitchenAid Hong Kong 保留一切最終解釋權。

BRAND STORY

From USA Since 1919

A CENTURY OF INGENUITY 百年匠心 饗你所想



1919

The Model H-5, designed with the unique "Planetary Mixing Action" that brought stand mixer to domestic family use. 第一台 H-5 廚師機誕生，為家用攪拌機賦予獨特的「行星軌跡攪拌系統」，顛覆了當時整個美國廚藝界。



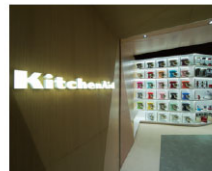
1993

Further expands the product line of kitchen appliances - allowing culinary creators more opportunity to express their cooking ideas. 創製更多廚電產品，如攪拌器及食物處理器，讓烹飪創作者能更廣闊地發揮無盡煮意。



1933

Model "K" launched, the first appearance of the now iconic "shape" of KitchenAid Stand Mixer. Model "K" 面世，成為現時廚師機經典造型的原型。



2018

New Culinary Excursion. KitchenAid first flagship launched in Hong Kong. 不一樣的美食旅程，香港旗艦店開幕。



1955

New colours were introduced. Reinforced KitchenAid as a reliable and stylish brand. KitchenAid 首次引入不同顏色廚師機，成為將色彩帶入廚房，生活、實力與型格兼備的家電品牌。



2019

Continue to bring all-round high quality kitchen appliances with 100 years of experience. 迎接100周年，以百年經驗持續帶來高質素產品，啟發更多創意煮食靈感。

BRAND STORY

From USA Since 1919

INTERNATIONAL RECOGNITION
百年品質 實力見証

#1 mixer brand in the world*
全球#1廚師機品牌*



KitchenAid

Found in 115 countries and
regions all around the globe
熱銷全球
115個國家及地區



Top rankings in
many reviews site
各類評測網站
屢獲好評

TopTenReviews™

BuzzFeed

Reviews.com

wirecutter
A New York Times Company

Over 50 elite 5-star hotels
in Hong Kong and Macau
超過50間香港及澳門
頂級五星酒店

The Peninsula
Mandarin Oriental Hotel Group
The Conrad Group
JW Marriot Hotel Hong Kong
Wynn Resort Macau
Venetian Macau

Winner of 2018
German Design Award
榮獲2018
德國設計大獎



*Source: Euromonitor International Ltd; Consumer Appliances 2020ED; "mixers" as per mixers definitions (includes countertop mixers and hand mixers); Retail Volume Sales in units.
源自: Euromonitor International Ltd; 消費電器2020版本; "攪拌機"根據mixers定義(包括檯式攪拌機和手持式攪拌機); 以2019年零售銷量計算。

©/™ ©2020 KitchenAid. All rights reserved. 版權所有。



Winner of
Red Dot Design Award
榮獲德國 Red Dot
設計大獎



U.S. FDA approved, CE approved
and comply with Regulation (EC)
No1935/ 2004

美國食品藥品監督管理局許可
通過歐盟安全認證&歐盟食品級檢測







BAKING 烘培

Stand Mixer 廚師機

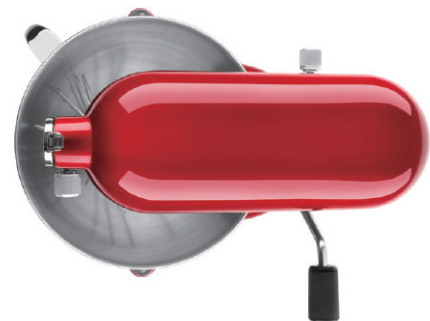
Stand Mixer Attachment 廚師機配件

Optional Stand Mixer Accessory 可選購廚師機附件

Hand Mixer 手持式打蛋器

CENTURY OF TECHNOLOGY

經歷百年工藝 創造卓越品質



Full Metal Construction 全金屬機身

Robust, stable, durable and easy to clean.

壓鑄鋅全金屬機身：堅固、穩定、耐用及易清潔。

59-Point Planetary Mixing Action

59點行星式攪拌軌迹*

Original planetary action for fast and thorough mixing

獨特的行星軌迹系統，能快速、徹底攪拌到碗中的每一個角落。

10-Speed Control 10檔轉速

To thoroughly mix, knead and whip ingredients quickly and easily

10檔轉速機械控制杆，手感更清晰，操作快捷。

Efficient Direct Motor 高效直驅摩打

The power is driven directly to the attachment and accessory for a much reliable and long lasting performance.

電源能直接驅動至配件和附件運作，效果更穩定，機身更持久耐用。



The beater reaches a touch point every 5° in a 360° rotation

360°攪拌碗中，每5°就有一個接觸點，確保攪拌均勻、充份。

* 4.8L/公斤：59 points/點
3.3L/公斤：69 points/點



Make the KitchenAid stand mixer the culinary center of your kitchen - its single attachment hub fits over 15 optional attachments*.

KitchenAid 廚師機的統一配件接口，可安裝多達15種多功能配件*。



Standard Accessories 標準附件

An extensive range of standard range of accessories to fit any culinary needs.

全能標準附件，滿足中西廚各種需要。

Dough hook for mixing and kneading yeast dough.

麵糰勾 用於混合、揉搓麵糰。



Flat beater for heavy mixtures.

攪拌槳 用於攪拌較為濃稠的食材。



Wire whip when you need to incorporate air into your mixtures, whisk whole egg, egg white or cream.

打蛋器 用於混入空氣在混合物中，打發全蛋、蛋白或忌廉。



*Stand mixer attachments sold separately. 廚師機配件需另行購買。



5KSM175PSB

4.8L Artisan Tilt Head Stand Mixer

4.8公升抬頭式廚師機

Flexible Around the Bowl 操作靈活，瞬間變烘焙達人

- Comes with 2 bowls so you don't need to keep washing up the one you have.
配備兩個攪拌碗，無需反復清洗。
- The flex edge beater is perfect for scraping every last bit of ingredients off the side of your bowl.
軟膠邊攪拌槳隨時處理黏附在攪拌碗內側上殘留的食材。
- The pouring shield is perfect for covering your bowl while you add ingredients.
添加食材時，可用引流罩遮蓋攪拌碗，防止食材飛濺。





Standard Accessories 標準附件

4.8L Stainless Steel Bowl
4.8公升不銹鋼攪拌碗



2.8L Stainless Steel Bowl
2.8公升不銹鋼攪拌碗



Flat Beater
平攪拌槳



Flex Edge Beater
軟膠邊攪拌槳



Dough Hook
麵糰勾



Wire Whip
打蛋器



Pouring Shield
引流罩



Cast Iron
鑄鐵黑 (BK)



Fresh Linen
米白 (FL)



Velvet Blue
絲絨藍 (VB)



Dried Rose
霧玫瑰 (DR)



Ink Blue
墨藍 (IB)

Model no. 主型號	5KSM175PSB	Voltage 電壓 (V)/ Frequency 頻率 (Hz)	220-240 V; 50/60 Hz
Series name 系列名稱	Artisan	Dimensions 產品尺寸 (mm 毫米)	360 (H) X 220 (W) X 340 (D)
Product name 產品名稱	4.8L Artisan Tilt Head Stand Mixer 4.8公升抬頭式廚師機	Net weight 產品淨重 (kg 公斤)	11.02
Wattage 功率 (W 瓦)	300	Max. capacity 最高攪拌容量	1kg all-purpose flour 1公斤普通麵粉
Motor type 摩打類型	AC (Alternating current) 直驅交流電	Country of origin 原產地	USA 美國



5KSM150PSB

4.8L Artisan Tilt Head Stand Mixer

4.8公升抬頭式廚師機

Iconic Tilt-head Design for Ease of Use 經典抬頭式設計，附件裝卸更容易

- Dressed in radiant and desirable colours, this stand mixer will suit all.
多款亮麗顏色選擇，滿足個性化追求。
- Aluminium with non-stick nylon coating dough hook and flat beater. Dishwasher-safe.
鋁製不黏尼龍塗層製成的平攪拌槳及麵糰勾，可直接放入洗碗碟機清洗。



Standard Accessories 標準附件



4.8L Stainless Steel Bowl
4.8公升不銹鋼攪拌碗



Flat Beater
平攪拌槳



Dough Hook
麵糰勾



Wire Whip
打蛋器



Pouring Shield
引流罩



Empire Red
帝王紅 (ER)



Guava Glaze
石榴粉紅 (GU)



Pistachio
開心果綠 (PT)



White
牛奶白 (WH)



Ice Blue
冰極藍 (IC)



Imperial Grey
帝國灰 (GR)



Candy Apple Red
珠光紅 (CA)

Model no. 主型號	5KSM150PSB	Voltage 電壓 (V)/ Frequency 頻率 (Hz)	220-240 V; 50/60 Hz
Series name 系列名稱	Artisan	Dimensions 產品尺寸 (mm 毫米)	360 (H) X 220 (W) X 340 (D)
Product name 產品名稱	4.8L Artisan Tilt Head Stand Mixer 4.8 公升抬頭式廚師機	Net weight 產品淨重 (kg 公斤)	10.6
Wattage 功率 (W 瓦)	300	Max. capacity 最高攪拌容量	1kg all-purpose flour 1公斤普通麵粉
Motor type 摩打類型	AC (Alternating current) 直驅交流電	Country of origin 原產地	USA 美國



5KSM3311XB

3.3L Artisan Tilt Head Stand Mixer

3.3公升抬頭式廚師機

Mini Mixer, Powerful Performance

體積纖巧·功能強大

- With the classic 4.8L Artisan tilt-head design while being 20% smaller, 25% lighter.
繼承經典抬頭式設計，但較經典4.8公升廚師機細20%，輕25%。
- Capable of making up to 680g flour in a single batch to fulfil daily needs.
一次過可處理680克麵粉，完美滿足小家庭的日常需要。



Standard Accessories 標準附件



3.3L Stainless Steel Bowl
3.3公升不銹鋼攪拌碗



Flat Beater
平攪拌槳



Dough Hook
麵糰勾



Wire Whip
打蛋器



Hot Sauce
辣椒紅 (HT)



Guava Glaze
石榴粉紅 (GU)



Black Matte
啞黑 (BM)

Model no. 主型號	5KSM3311XB	Voltage 電壓 (V)/ Frequency 頻率 (Hz)	220-240 V; 50/60 Hz
Series name 系列名稱	Artisan	Dimensions 產品尺寸 (mm 毫米)	312 (H) X 198 (W) X 312 (D)
Product name 產品名稱	3.3L Artisan Tilt Head Stand Mixer 3.3 公升抬頭式廚師機	Net weight 產品淨重 (kg 公斤)	6.5
Wattage 功率 (W 瓦)	250	Max. capacity 最高攪拌容量	680g all-purpose flour 680克普通麵粉
Motor type 摩打類型	DC (Direct current) 直驅電	Country of origin 原產地	USA 美國

PASTA SHEET ROLLER AND CUTTER SET

意粉滾筒壓麵
和切麵器3件套裝 | KSMPPRA



Fettuccine
闊條麵

Spaghetti
意大利粉

Can prepare 6.5mm wide
Fettuccine and 2mm Spaghetti.

可製作 6.5 毫米闊闊條麵及
2 毫米闊意大利粉。

PASTA SHEET ROLLER

意粉滾筒壓麵器 | KSMPPSA



PASTA CUTTER SET

意粉切麵器2件裝 | KSMPPCA



Lasagnette
千層麵

Capellini
天使麵

Can prepare 12mm wide Lasagnette and 1.5mm Capellini.

可製作 12 毫米闊千層麵及 1.5 毫米闊天使麵。

GOURMET PASTA PRESS

意粉壓裝器 | KSMPEXTA



PASTA DRYING RACK

意粉晾麵架 | KPDR



METAL FOOD GRINDER

金屬碎肉器組合 | KSMMGA



With the included fine, medium and coarse grinding plates and two sausage stuffer tubes. The possibilities are endless to create a variety of fresh, inventive foods.

組合包括粗、中、幼孔磨盤，及兩個灌腸器，發揮無限創意。



FOOD GRINDER

碎肉器 | KSMFGA



The coarse grinding plate is great for grinding raw meats for burgers or meatloaf, while the fine grinding plate quickly grates hard cheeses and helps you make bread crumbs.

粗孔磨盤可將生肉磨碎，製作漢堡或肉餅，而細孔磨盤可用於快速磨碎硬芝士或製作麵包屑。

SAUSAGE STUFFER

灌腸器 | KSMSSA



Attach to food grinder (KSMFGA) to create homemade sausage with ease.

配合碎肉器(KSMFGA)使用，輕鬆自製肉腸。



SLOW JUICER

慢磨原汁機 | KSM1JA

This slow juicer attachment first slices then processes e.g. hard fruits and vegetables for maximum nutrient-rich extraction.

慢速榨汁機先將食材如堅硬的蔬果切成薄片，再徹底榨取其中豐富的營養。



CITRUS JUICER

柑橘榨汁器 | JE

Ideal for working with large quantities of citrus fruits, it rapidly extracts juice from handheld fruits directly while catching seeds in a built-in strainer.

適用於處理大量柑橘類水果，可快速直接地榨取水果汁液，並用內置濾網籃收集果籽。



ICE CREAM MAKER*

雪糕機組合* | KICA0WH

Can produce up to 1.9 L of soft consistency ice cream, sorbets or frozen desserts.

可製作 1.9 公升雪糕、雪芭或冰凍甜品



Ice cream maker
雪糕機組合
Capacity 容量：1.9L 公升

*Cannot be used with 5KSM3311XB Artisan Mini Mixer. 配件不能與5KSM3311XB 廚師機配搭使用。



FOOD PROCESSOR ATTACHMENT

食物處理器 | KSM2FPA

Simply slice, dice, shred and julienne your favourite fruits, vegetables and hard cheeses. The exclusive ExactSlice System allows you to slice from thick to thin with one slide of the lever.

輕鬆將你喜歡的水果、蔬果或硬芝士切成片狀、粒狀或不同的細絲。獨有的ExactSlice系統能讓你精準地透過滑動處理食材。



GRAIN MILL

穀物研磨器 | KGM

Grinds wheat, oats, corn, rice, and other low-moisture, low-oil grains.

可研磨小麥、燕麥、粟米、大米和其他低水分低油脂類穀物。





SHREDDER SLICER

蔬果切絲切片器 | KSMVSA

Easily add freshly sliced or shredded ingredients to all of your favourite salads, entrees, sides and more.

輕鬆添加新鮮的切片或切絲食材，製作各種喜愛的沙律、主菜、配菜等。



FRUIT & VEGETABLE SPIRALIZER

蔬果削皮切絲切片器 | KSM1APC

Premium metal construction spiralizer attachment with peel, spiralize, core and slice blades offers versatile cutting options. The perfect companion for healthful eating.

優質金屬材質螺旋器配件，帶有削皮、螺旋、切絲和切片刀具，可提供多種食材切割效果，作為健康飲食的完美伴侶。



OPTIONAL STAND MIXER ACCESSORY *

可選購廚師機附件*



Applicable on 適用於
4.8L 公升# 3.3L 公升#



K45WW



KSM35WW

Wire Whip
打蛋器



K45DH



KSM35CDH

Dough Hook
麵糰勾



K5THCB



KSM35CFB

Flat Beater
平攪拌漿



K5THSBP



KSM35SSFP

Stainless Steel Bowl
不銹鋼攪拌碗



KN1PS



KSM35PS

Pouring Shield
引流罩



KFE5T



KFE35T

Flex Edge Beater
軟膠邊攪拌漿

Applicable on 4.8L Only 只適用於4.8公升#



5KSM5THWWSS

Stainless Steel Wire Whip
不銹鋼打蛋器



5KSM5THDHSS

Stainless Steel Dough Hook
不銹鋼麵糰勾



5KSM5THFBSS

Stainless Steel Flat Beater
不銹鋼平攪拌漿



K5M5GB

Glass Bowl with Measurement Markings & Lid
玻璃攪拌碗
(帶刻度及碗蓋)



KB3SS

2.8L Stainless Steel Bowl
2.8公升不銹鋼攪拌碗



KBC90N

Bowl Cover (2 Packs)
攪拌碗蓋
(2件裝)



5KSM5TH3PSS

Stainless Steel 3pcs Pack (Including Wire Whip, Dough Hook, Flat Beater)

不銹鋼3件套裝
(包括打蛋器、麵糰勾及平攪拌漿)



KSMCT1

- Empire Red 帝王紅 (ER)
- Khaki 卡其 (KB)
- Onyx Black 瑪瑙黑 (OB)

Fitted Stand Mixer Cover
廚師機套

*Optional stand mixer accessories are sold separately. 可選購廚師機附件需另行購買。

Individual accessories are included in specific models, for details please refer to the related pages of product introduction. 個別附件已按型號隨機附送，詳情請細閱有關產品介紹頁。

OPTIONAL STAND MIXER ACCESSORY



5KHM9212B

9 Speed Hand Mixer

9速手持式打蛋器



Empire Red
帝王紅 (ER)



Velvet Blue
絲絨藍 (VB)

Ready to Tackle any Job, Big or Small 輕巧機身多種附件，食材處理小能手

- Precise electronic control: choice among 9 speeds with soft start. 9段精準調速，滿足由不同發打的需求，並設有「慢速啟動」功能。
- Specially designed stainless steel turbo beaters; a wire whip, two dough hooks and a mixing rod. 配備攪拌槳、打蛋器、麵糰勾、攪拌棒多種附件，針對處理不同食物。
- Lockable swivel round cord to approach ingredients easily from any angle. 靈活旋轉，鎖定電線方向設計，方便從不同方向打發食物。

Standard Accessories 標準附件

2 Stainless Steel
Turbo Beaters
不銹鋼
攪拌槳 2支



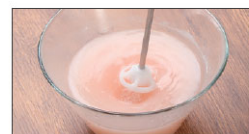
2 Stainless Steel
Dough Hooks
不銹鋼
麵糰勾 2支



Wire Whip
打蛋器



Mixing Rod
攪拌棒



Cotton
Storage Bag
全棉收納袋



Model no. 主型號	5KHM9212B	Voltage 電壓 (V)/ Frequency 頻率 (Hz)	220-240 V; 50/60 Hz
Product name 產品名稱	9 Speed Hand Mixer 9速手持式打蛋器	Dimensions 產品尺寸 (mm 毫米)	150 (H) X 80 (W) X 200 (W)
Revolutions per minute 轉速(轉/分鐘)	230 - 1300	Net weight 產品淨重 (kg 公斤)	1.1
Wattage 功率 (W 瓦)	85	Country of origin 原產地	USA 美國



KitchenAid

5KHM5110B

5 Speed Hand Mixer

5速手持式打蛋器



Empire Red
帝王紅 (ER)



Onyx Black
瑪瑙黑 (OB)

Mix up with 5 Speeds and 2 Accessories 5段調速·2大核心附件·讓您輕鬆享受烘焙時光

- 5-speed control can let you mix from a slow stir to a fast whip without splattering.
5段調速，每檔均設「慢速啟動」以防止食材飛濺。
- Stainless steel beater and wire whip are applicable for dishwasher.
不銹鋼攪拌槳和打蛋器，可用於洗碗機，烹飪更輕鬆。
- Beater eject button for quick, one-handed release.
一鍵退槳，單手即可操作，簡單方便。

Standard Accessories 標準附件

2 Stainless Steel
Turbo Beaters
不銹鋼
攪拌槳 2 支



Wire Whip
打蛋器



Model no. 主型號	5KHM5110B	Voltage 電壓 (V)/ Frequency 頻率 (Hz)	220-240 V; 50/60 Hz
Product name 產品名稱	5 Speed Hand Mixer 5速手持式打蛋器	Dimensions 產品尺寸 (mm 毫米)	295 (H) X 95 (W) X 210 (W)
Revolutions per minute 轉速(轉/分鐘)	350 - 1000	Net weight 產品淨重 (kg 公斤)	1.17
Wattage 功率 (W 瓦)	85	Country of origin 原產地	USA 美國



KitchenAid

425°F

Toast • Bake • Broil
Reheat
Keep Warm
Pizza •
Roast •
Cookies •

KitchenAid



CULINARY 烹飪

Countertop Oven 電焗爐





KitchenAid

5KCO211B

Countertop Oven 電焗爐



Black Matte
啞黑 (BM)

Maximized Capacity Allows You to Cook More 小身材，大容量，多種美食一機完成

- Bottom control delivers more space and fits a 12" pizza or 2 whole chickens* and more.
底部橫置操作面板，釋放更多空間，一次可烤製12吋薄餅或2隻小全雞*。
- Up to 9 preset cooking functions settings including bake, cookies, bagel and toast.
提供烘焗、曲奇、貝果及多士等9個預設烹調模式。
- Fast pre-heat function can save your time.
快速預熱功能可節省烹調時間。

Standard Accessories 標準附件

9" x 13" Baking Pan
with grill rack
9 x 13吋焗盤和燒烤架

Wire Shelf
燒烤架

Removable crumb tray
可拆卸食物屑托盤



* 2 whole chickens based on the weight 3.3 pounds. 2隻小全雞以3.3磅之重量計算。

Model no. 主型號	5KCO211B	Dimensions 產品尺寸 (mm 毫米)	287 (H) X 432 (W) X 406 (W)
Product name 產品名稱	Countertop Oven 電焗爐	Net weight 產品淨重 (kg 公斤)	7.3
Capacity 容量	21L 公升	No. of cooking function 烹調模式數量	9 (Bake, broil, roast, bagel, cookies, toast, reheat, keep warm, pizza 烘焗、煎烤、燒烤、貝果、曲奇、多士、翻熱、保溫和薄餅)
Wattage 功率 (W 瓦)	1647 - 1960	Country of origin 原產地	China 中國
Voltage 電壓 (V)/ Frequency 頻率 (Hz)	220-240 V; 50/60 Hz		





HEALTHY & FRESH 健康與新鮮

Stand Blender 攪拌機

Hand Blender 手持式攪拌機

Food Processor 食物處理器

Food Chopper 食物切碎器





5KSB1585B

Diamond Stand Blender

鑽石攪拌機



Empire Red
帝王紅 (ER)



Onyx Black
瑪瑙黑 (OB)



Almond Cream
杏仁白 (AC)

Exclusive Diamond Blending System for Quick and Efficient Blending

獨特鑽石型攪拌系統，帶來快速、高效效果。

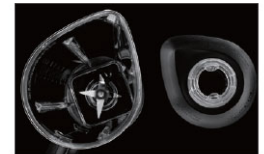
- BPA-free patented diamond pitcher, stainless steel blades and electronic controls combine to create a powerful vortex that is fast and thorough for exceptional blending results. 不含雙酚A的專利攪拌杯、不銹鋼刀片及電子控制，合共造成強大漩渦，令攪拌效果更出眾。
- Intelli-Speed motor control senses contents and maintains optimal speed to power through all ingredients. 智能調速控制，能自動感應食材而維持最佳攪拌速度。
- Special "hot foods"-button and "soft start"-feature. 備有「熱食」及「慢速啟動」功能。

Standard Accessories 標準附件

1.75L One-piece Pitcher
1.75公升攪拌杯



Lid with 60ml ingredient cup
杯蓋內含60ml 食材量杯



Model no. 主型號	5KSB1585B	Voltage 電壓 (V)/ Frequency 頻率 (Hz)	220-240 V; 50/60 Hz
Product name 產品名稱	Diamond Stand Blender 鑽石攪拌機	Dimensions 產品尺寸 (mm 毫米)	419 (H) X 229 (W) X 216 (D)
Wattage 功率 (W 瓦)	550	Net weight 產品淨重 (kg 公斤)	4.5
Revolutions per minute 轉速(轉/分鐘)	2000 - 11500	No. of functions 程序數量	6 (chop, mix, puree, liquify, crush ice and hot foods 切碎、攪拌、果泥製作、果汁、碎冰和熱食)
Pitcher capacity 攪拌杯容量	1.75L 公升	Country of origin 原產地	USA 美國





5KHB2569G

5 Speed Hand Blender

5速手持式攪拌機



Empire Red
帝王紅 (ER)

Designed for Multitude of Tasks 輕鬆製作各款佳餚

- 3 interchangeable stainless steel bell blades for various tasks from ice crushing to chopping cooked meats and frothing milk.
三款可轉換不銹鋼刀頭，滿足各種如碎冰、切肉或打奶等需求。
- Powerful 5 speed DC motor for quiet, exceptional control with long-lasting operation.
強效5速直驅摩打操作，操作簡易，寧靜耐用。

Standard Accessories 標準附件

S Blade S型刀頭
(Use for blending, crushing, puréeing)
用於攪拌、碾壓、製作果泥)



Star Blade 星型刀頭
(Use for shredding, chopping and mincing)
用於切碎、切細、絞碎)



Whisk
打蛋器



600ml Chopper
600毫升攪碎碗
(blade included
含刀片)



20cm Blending Arms
20厘米攪拌棒



Frothing Blade
打奶泡刀頭

(Use for frothing milk and mixing batters)
用於牛奶起泡、混合麵糊)



3 Bell Guards
刀頭保護罩3個



1 Pan Guard
鍋具保護罩1個



Graduated
1L Pitcher
1公升攪拌杯



Storage Case
實用套件收納盒



Model no. 主型號	5KHB2569G
Product name 產品名稱	5 Speed Hand Blender 5速手持式攪拌機
Wattage 功率 (W 瓦)	180
Revolutions per minute 轉速(轉/分鐘)	610 - 11000

Voltage 電壓 (V)/ Frequency 頻率 (Hz)	220-240 V; 50/60 Hz
Dimensions 產品尺寸 (mm 毫米)	397 (H) X 65 (W) X 65 (D)
Net weight 產品淨重 (kg 公斤)	3.5
No. of speeds 轉速檔位	5
Country of origin 原產地	China 中國



5KFP0719B

7 Cup Food Processor

7 杯食物處理器

Fresh Prep with Precision Every Day 預備精準好滋味

- Innovative design with a one-click, twist-free, bowl assembly and latched lid that is very easy to use & clean. 採用創新設計，無需扭動，一按即可拆除攪拌碗和鎖蓋，操作及清潔均輕鬆簡便。
- Multi-use accessories for chop, purée, knead, mix, shred, and slice with simplicity. 多功能附件方便切碎、果泥製作、揉捏、攪拌、切絲及切片。
- The most in-bowl compact accessory storage. The blades and discs fit perfectly inside the bowl to make storage easy, and convenient under base cord wrap. 存放附件方便，刀片和刀盤可放入攪拌碗中，電源線亦可收藏於機底，方便存放。





Empire Red
帝王紅 (ER)

Standard Accessories 標準附件

Reversible 4mm
medium slicing/
shredding disc
雙面使用4毫米切絲/
切片刀盤



6mm thick slicing
only disc
6毫米切片刀盤



Multi-purpose blade
多功能刀片
Dough blade
麵糰刀片



1.7L BPA-free bowl
1.7公升不含雙酚A
攪拌碗

Hinged lid with 2-in-1
feed tube and food
pusher

相連杯蓋及二合一
進料管設計



Model no. 主型號	5KFP0719B	Voltage 電壓 (V)/ Frequency 頻率 (Hz)	220-240 V; 50/60 Hz
Product name 產品名稱	7 Cup Food Processor 7杯食物處理器	Dimensions 產品尺寸 (mm 毫米)	390 (H) X 195 (W) X 195 (D)
Wattage 功率 (W 瓦)	250	Net weight 產品淨重 (kg 公斤)	2.9
Revolutions per minute 轉速(轉/分鐘)	750 - 1500	No. of speeds 轉速檔位	2 Speed + Pulse 2檔 + 脈衝
Bowl capacity 攪拌碗容量	1.7L 公升	Country of origin 原產地	China 中國





5KFC3516B

3.5 Cup Food Chopper
3.5 杯食物切碎器



Enjoy Endless Fresh Options Every Day 輕鬆製作每天鮮味食材

- Stainless steel blade to quickly chop, mix.
多功能刀片能徹底快速切碎、攪拌食材。
- Drizzle basin to trickle in the right amount of oil or other liquids whilst processing.
碗蓋頂設有液體滴漏口，方便於攪拌過程加入油或其他調味汁。
- Simple one-touch operation.
一鍵啟動，方便快捷。

Standard Accessories 標準附件

Lid with liquid
drizzle basin
攪拌碗蓋
帶調料滴孔



830ml BPA-free bowl
830毫升不含雙酚A
攪拌碗



Multipurpose blade
多功能刀片



Empire Red
帝王紅 (ER)



Guava Glaze
石榴粉紅 (GU)



Almond Cream
杏仁白 (AC)

Model no. 主型號	5KFC3516B	Voltage 電壓 (V)/ Frequency 頻率 (Hz)	220-240 V; 50/60 Hz
Product name 產品名稱	3.5 Cup Food Chopper 3.5 杯食物切碎器	Dimensions 產品尺寸 (mm 毫米)	222 (H) X 178 (L) X 143 (W)
Wattage 功率 (W 瓦)	240	Net weight 產品淨重 (kg 公斤)	1.26
Revolutions per minute 轉速(轉/分鐘)	2450 - 3450	No. of speeds 轉速檔位	2 Speed + Pulse 2檔 + 脈衝
Bowl capacity 攪拌碗容量	830ml 毫升	Country of origin 原產地	China 中國





COFFEE & BREAKFAST

咖啡及早餐

Electrical Kettle 電熱水壺

Toaster 多士爐



5KEK1522G

1.5L Pro Line Electric Kettle

1.5公升 Pro Line 電熱水壺

Built for Speed 快捷精準

- Adjustable temperature, from 50°C to 100°C, choose the right temperature for your preparations of floral tea, hot tea or others.
50°C至100°C精準控溫，能以不同溫度沖泡飲料如花茶、奶茶或其他飲料。
- Dual wall construction makes a better insulation and keeps water hotter longer and is cooler to the touch.
兩層內膽設計，令隔熱能力更強，讓水溫維持高溫及更持久，而外圍亦不會過熱。
- Temperature gauge provides a precise reading even when removed from its base.
即使水壺放離底座，圓形溫度計亦可讓你對壺中溫度一目瞭然。





Candy Apple Red
珠光紅 (CA)



Model no. 主型號	5KEK1522G	Dimensions 產品尺寸 (mm 毫米)	218 (H) X 263 (W) X 210 (D)
Product name 產品名稱	1.5L Pro Line Electric Kettle 1.5公升 Pro Line 電熱水壺	Net weight 產品淨重 (kg 公斤)	2.15
Wattage 功率 (W 瓦)	2400	Capacity 容量	1.5L 公升
Voltage 電壓 (V)/ Frequency 頻率 (Hz)	220-240 V; 50/60 Hz	Temperature 溫度選擇	50 - 100°C
		Country of origin 原產地	China 中國



5KEK1222B

1.25L Electric Kettle

1.25公升電熱水壺



Easy to Use, Compact and Stylish

易於使用·外形纖巧時尚

- Dome style kettle quickly boils water with a compact footprint.
拱型設計讓水更易煮沸，同時不佔空間。
- On/Off switch with LED indicator light.
LED開關指示燈。
- Stainless steel construction with wide fill opening.
Durable and easy to use.
不銹鋼用料及寬闊入水口，既耐用又易於掌握。
- Removable limescale filter and 360° base.
For easy cleaning and transfer of the kettle.
360° 分離式底座及可移除的除鈣過濾網，方便移動或清潔。



Empire Red
帝王紅 (ER)



Stainless Steel
不銹鋼 (SX)



Model no. 主型號	5KEK1222B	Dimensions 產品尺寸 (mm 毫米)	262 (H) X 178 (W) X 226 (D)
Product name 產品名稱	1.25L Electric Kettle 1.25公升電熱水壺	Net weight 產品淨重 (kg 公斤)	1.14
Wattage 功率 (W 瓦)	1850 - 2200	Capacity 容量	1.25L 公升
Voltage 電壓 (V)/ Frequency 頻率 (Hz)	220-240 V; 50/60 Hz	Country of origin 原產地	China 中國



KitchenAid

5KMT2116B

Manual Control Toaster

兩件式多士爐



Enjoy the Versatility to Toast Just about Any Kind of Bread

随心烘焙不同種類麵包

- Shade control dial with 7 shade settings including Bagel, Defrost & Toast, Reheat and Keep Warm.
可設置7種精準烘烤程度，包括貝果、解凍和烘烤、翻熱及保溫功能。
- Extra wide 3.8cm slots for toasting a variety of shapes and sizes of bread and pastries.
特闊3.8厘米麵包槽，烘烤不同大小形狀包類。
- Extra-high lift lever for checking the level of toasting at any time, by lifting the bread even in small pieces.
特高升降桿，可隨時將細小麵包升高查看烘烤程度。



Onyx Black
瑪瑙黑 (OB)



Empire Red
帝王紅 (ER)



Model no. 主型號	5KMT2116B	Voltage 電壓 (V)/ Frequency 頻率 (Hz)	220-240 V; 50/60 Hz
Product name 產品名稱	Manual Control Toaster 多士爐	Dimensions 產品尺寸 (mm 毫米)	202 (H) X 305 (W) X 196 (D)
Wattage 功率 (W 瓦)	1200	Net weight 產品淨重 (kg 公斤)	2.14
		Country of origin 原產地	China 中國



www.kitchenaid.hk

KitchenAid Experience Store

Shop 211-215, Lee Garden Three, 1 Sunning Road,
Causeway Bay, Hong Kong

香港銅鑼灣利園三期211-215號舖

Tel 電話：(852) 3759 8228

Customer Service Hotline 顧客服務熱線

Tel 電話：(852) 3759 8238